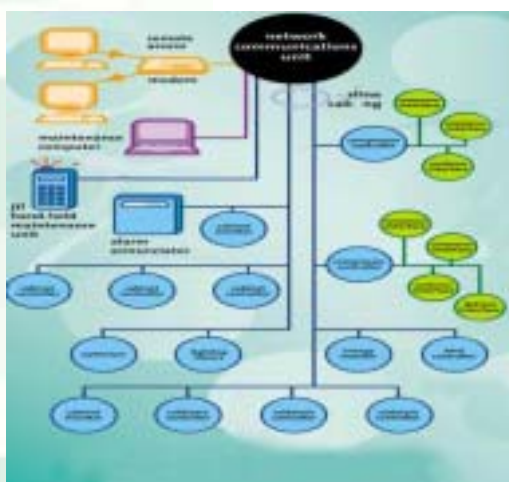


Computer based alarm and data management system.



- 24/7 stock protection
- Automatic data extraction and storage
- Access for alarm investigation and management
- Local or remote data archiving
- User definable security settings
- Suitable for use with any networked JTL products
- Manage multiple sites from a single PC
- Straight forward installation

System Description An NC160 system comprises a series of network devices connected, via a 2-wire network, to an NC160 network controller. A computer is connected to the NC160 and JTL Windows based SiteViewLite software is installed on the PC. SiteViewLite provides access to the system for interrogation or adjustment and automatically extracts and stores data stored in the short-term memory of the NC160.

Network Devices Any JTL network device can connect to the NC160. The available devices include cabinet controllers and monitors, coldroom controllers and monitors, lighting controllers, plant controllers and monitors, BMS controllers and monitors, energy monitors and alarm annunciators.

Alarm Management Alarms can be announced at an alarm annunciator and/or at the PC connected to the system. Alarms can be viewed and muted at the alarm annunciator and interrogated/accepted at the system PC.

The Site Computer The computer connected to the NC160 does not need to be dedicated to the system. SiteViewLite software can run alongside other applications installed on the PC and can be operated as required to provide system access. When SiteViewLite is operating, any active alarms present on the system can be presented at the computer.

Various levels of access can be defined, with one level of users having "view only" access while another user has password protected access for alarm acceptance or adjustment of system parameters.

Datalogging

Operating SiteViewLite software for the first time will create a database on the PC hard-drive. Subsequent operation of the software will initiate automatic transfer of un-archived data from the NC160 to the database.

An alarm is generated when the NC160 memory is substantially full with un-archived data.

Remote Access

The NC160 can be supplied with an internal modem which allows a dial-up connection to be established between a remote PC and the NC160. SiteViewLite software running on the remote PC allows remote access to the system and will create and populate a data archive on the remote PC.

Off-Site Alarms

Alarms can be delivered off-site by connecting the dial-out relay in the network controller to a security panel dial-out system.

When supplied with an internal modem, alarms can be forwarded direct to the JTL Monitoring Centre for attention as part of an outsourced system management package.

Multiple Sites

A single PC loaded with SiteViewLite can be used to remotely manage multiple sites. Individual databases are created on the computer's hard-drive to store data from the different sites.

Outsourced System Management

JTL can offer configurable system management packages. These services include remote validation and escalation of alarms, system reporting and remote data archiving.

Doc No. 03168 NC160-network-datasheet.pmd Issue 1 Mar 2005

JTL Systems Limited

Head Office

Newbury

tel: 44 (0)1635 263646

Technical Support Centre

Newbury

tel: 44 (0)870 321 8585

Monitoring Centre

Sunderland

tel: 44 (0)870 321 4161