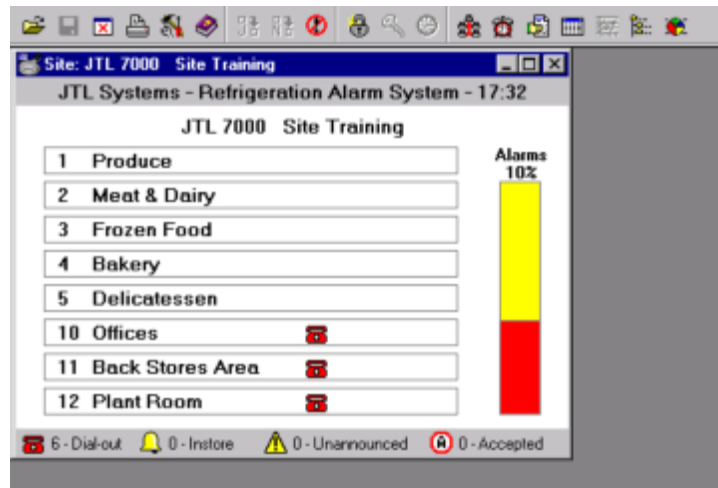




SALES SUPPORT JTL SiteEngineer Installation Notes



Please read through before commencing the installation.

CD may run automatically when inserted (depending on your PC settings), if it doesn't:

- Use Windows Explorer to locate CD drive and it's contents.
- Select **Setup.exe** file (not the text file).
- Installation wizard will start, select 'custom'. **Click Next**.
- Select **SiteView Client** and select **X** "this feature will not be available". **Click Next**.
- Select **Install** and software will be installed.
- Select **Yes** to restart PC.

Start **SiteLicence Manager**

(Start – Programs - JTL SiteSuite Client - SiteLicence Manager)

- Click **Add Licence** icon.
- SiteLicence Manager will now display a **Machine Key** number.
- *Contact JTL and request a Licence Code number.
- (JTL will require information listed overleaf)
- Select **New Licence**
- Insert ****Licence Code** click **OK** and close SiteLicence Manager

Start **SiteEngineer**

(Start – Programs – JTL SiteSuiteClient – SiteEngineer)

- Select Options in the File drop down menu (or use icon)
- Select the **Remote** tab
- At JTL Network window, select your modem.
- Click **Configure**
- Select **Connections** tab
- Settings should be: - Data bits =**7**
- Parity =**Even**
- Stop bits =**1**
- Click **OK**
- Options window will appear again – **Click OK**

Software is now set up for remote access to a JTL Network.

* Installation Tips Overleaf

Installation Tips

* Contact JTL:

When contacting JTL to request a Licence Code, the following information will be required:

- Software purchase order number.
- Machine Key number.
- Computer make and model.
- Computer serial number.
- Operating system (i.e. Win95,Win98,Win2000,WinME etc)

Call JTL Newbury on 01635 263646

OR

E-mail JTL at

(Machine key number will be automatically inserted into the e-mail message by selecting the Send Machine Key icon).

OR

Fax JTL on 01635 263647

The JTL software registration form can be used to fax the Machine Key number. The Licence Code will be faxed back to you.

The Machine Key number can be copied and pasted into an office document.

** The Licence Code can be copied from an office document and pasted into the Licence Number Window.

PC Specification

Absolute minimum: Windows 95,32Mb RAM, CD Rom drive, 800 x 600 resolution monitor.

Preferred minimum: Windows 95,98,2000, 64Mb RAM, CD Rom drive, 1024 x 768 resolution monitor.

Doc No. 02903 JTL-SiteEngineer-Inst-Notes.pmd Issue 1 Jan 2003

JTL Systems Limited

Head Office	Newbury	tel: 44 (0)1635 263646
Technical Support Centre	Sheffield	tel: 44 (0)114 256 0908
Monitoring Centre	Sunderland	tel: 44 (0)870 3215791